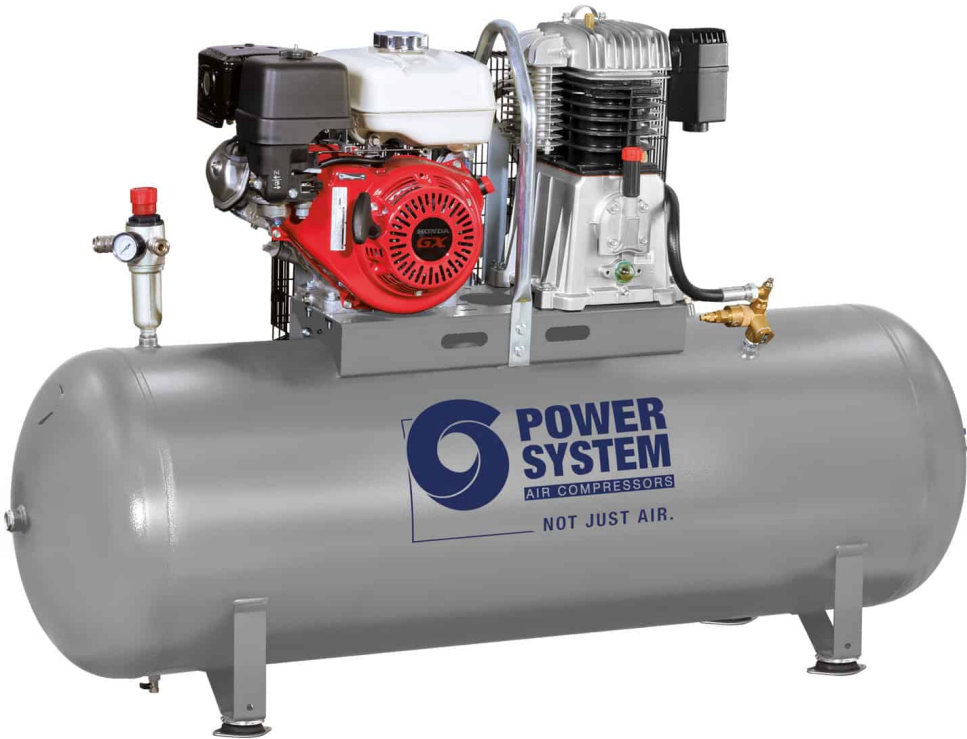


PS7/100 9S HONDA

*Image is for illustrative purposes only

Professional petrol motor-compressor with Honda engine, for working environments without electricity.

Professional petrol-driven motor compressor suitable for all uses where an electric power supply is not possible. Can be used with a wide range of pneumatic tools. Equipped with a 9 hp pumping unit with a Honda internal combustion engine, a 100 litre tank with a double handle and semi-inflatable wheels to be transported on any terrain, and a roll bar useful for lifting with hoists and hoist trucks.



TECHNICAL DATA

Product code	N7FC8P1PWS210	
Lubrication	Lubricated	
Compressor pump	PS7	
Air receiver (l)	100	
Power	Hp	9
	kW	6,7
Max. pressure	bar	10
	p.s.i.	145
Nr. of cylinders	1	
Air displacement	l/min.	660
	c.f.m.	23,2
R.P.M.	970	
Type motor	Thermal	
Gross weight	kg	152
	lb	335,1
Packaging dimensions LxWxH (mm)	1140x650x1200	
EAN code	8016738793956	