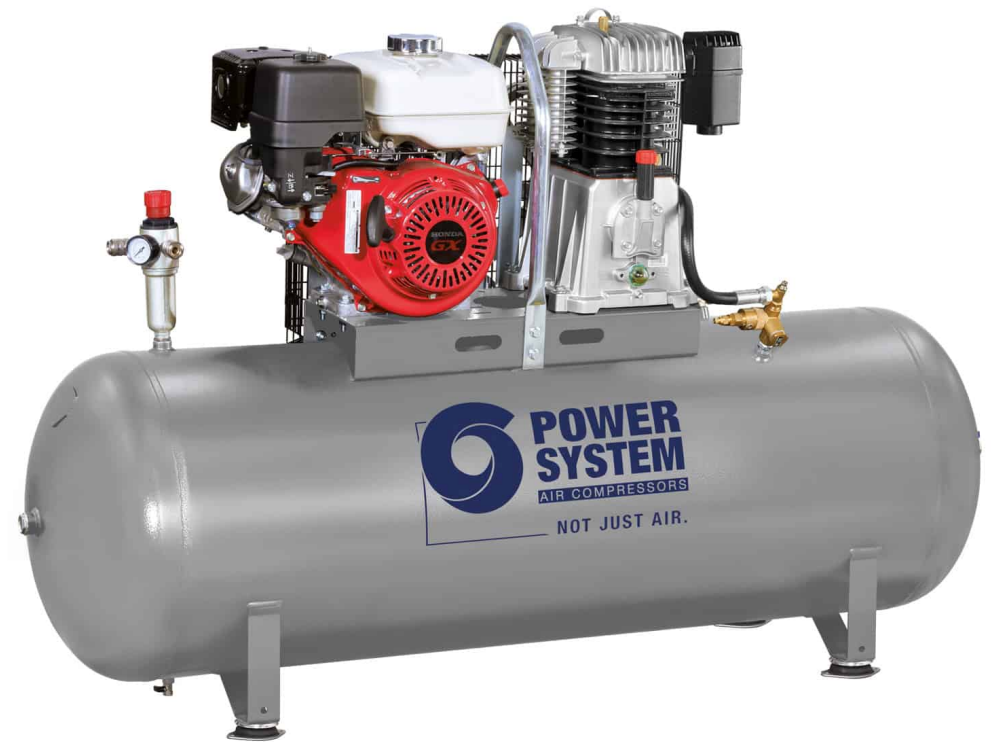


PS7/270 F11S HONDA
**Image is for illustrative purposes only*

Professional petrol motor-compressor with Honda engine, for working environments without electricity.

Professional petrol-driven motor compressor suitable for all uses where an electric power supply is not possible. Can be used with a wide range of air tools requiring high air consumption. Equipped with a powerful 11 hp two-stage pumping unit with Honda internal combustion engine and a 270-litre tank for a large air reserve with four vibration-damping feet. The robust metal belt cover protects all moving parts.



TECHNICAL DATA

Product code	N7NN9P1PWS212	
Lubrication	Lubricated	
Compressor pump	PS7	
Air receiver (l)	270	
Power	Hp	11
	kW	8,2
Max. pressure	bar	10
	p.s.i.	145
Nr. of cylinders	1	
Air displacement	l/min.	945
	c.f.m.	33,3
R.P.M.	1400	
Type motor	Thermal	
Gross weight	kg	188
	lb	414,5
Packaging dimensions LxWxH (mm)	1640x560x1330	
EAN code	8016738793970	